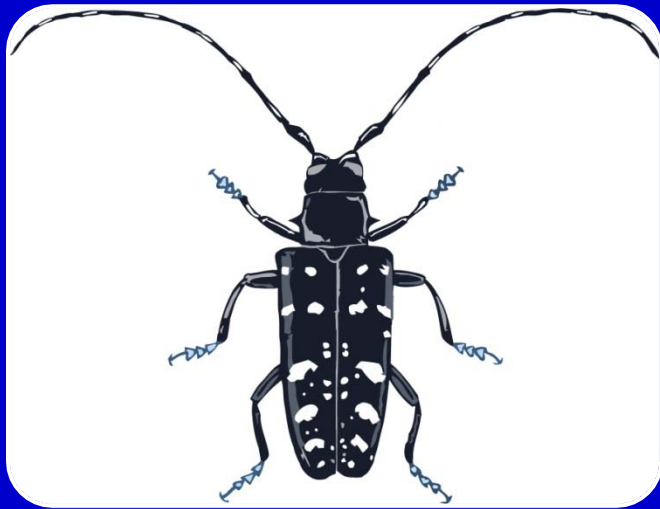


ALB JEOPARDY!



Adapted from a design from the James Madison Center, JMU



ALB JEOPARDY!



BEETLE BIOLOGY	WHO NEEDS TREES?	BEETLES IN DISGUISE	HURTING OUR HARDWOODS	ERADICATION EFFORTS
<u>20</u>	<u>20</u>	<u>20</u>	<u>20</u>	<u>20</u>
<u>40</u>	<u>40</u>	<u>40</u>	<u>40</u>	<u>40</u>
<u>60</u>	<u>60</u>	<u>60</u>	<u>60</u>	<u>60</u>
<u>80</u>	<u>80</u>	<u>80</u>	<u>80</u>	<u>80</u>
<u>100</u>	<u>100</u>	<u>100</u>	<u>100</u>	<u>100</u>

BEETLE BIOLOGY – 20

“ALB” IS THE ABBREVIATION
FOR THIS INSECT



BEETLE BIOLOGY – 40

THESE ARE THREE IDENTIFYING
CHARACTERISTICS OF ALB



BEETLE BIOLOGY – 60

**ALTHOUGH IT CAN FLY AS FAR
AS 1.5 MILES, THE ALB IS
MORE LIKELY TO TRAVEL TO
PREVIOUSLY UNINFESTED
AREAS THIS WAY**



BEETLE BIOLOGY – 80

THIS IS THE NUMBER OF EGGS
A FEMALE ALB CAN LAY IN
ONE SEASON



BEETLE BIOLOGY - 100

THIS IS THE SCIENTIFIC NAME
FOR THE ASIAN LONGHORNED
BEETLE



WHO NEEDS TREES? – 20

THIS IS THE ALB'S FAVORITE
HOST TREE



WHO NEEDS TREES? – 40

NAME THREE TYPES OF HOST
TREES (THAT HAVE NOT
ALREADY BEEN USED IN
ANOTHER ANSWER)



WHO NEEDS TREES? - 60

THESE ARE EXAMPLES OF ONE
LOCAL AND ONE REGIONAL
IMPACT OF TREE LOSS



WHO NEEDS TREES? – 80

**ALB ARRIVED IN THE USA IN
THIS TYPE OF MATERIAL**



WHO NEEDS TREES? – 100

THESE ARE TWO TYPES OF
TREES THAT ARE NOT HOST
TREES



BETLES IN DISGUISE – 20



THIS PHOTO
MOST
ACCURATELY
DEPICTS ALB



BEETLES IN DISGUISE – 40

THE PHOTO THAT SHOWS AN ALB



BEETLES IN DISGUISE – 60

THESE CHARACTERISTICS
INDICATE THAT THIS IS NOT
ALB:



BEETLES IN DISGUISE – 80

YOU CAN TELL THAT THIS
(CHOOSE ONE) DAMAGE WAS
ACTUALLY CAUSED BY ALB
BECAUSE...



BEETLES IN DISGUISE – 100

**THIS IS THE APPROXIMATE
NUMBER OF SPECIES OF
LONGHORNED BEETLES IN
MASSACHUSETTS**



HURTING OUR HARDWOODS - 20

DEFINE “OVIPOSITION PIT”



HURTING OUR HARDWOODS – 40

**MOST TREE DAMAGE IS
CAUSED DURING THIS PHASE
OF THE ALB LIFE CYCLE**



HURTING OUR HARDWOODS – 60

THESE ARE TWO SIGNS THAT
A HOLE IN A TREE WAS MADE
BY ALB



HURTING OUR HARDWOODS – 80

DEFINE AND
DESCRIBE FRASS



HURTING OUR HARDWOODS – 100

WHAT IS DONE TO A TREE
WHEN IT IS FOUND TO BE
INFESTED WITH ALB



ERADICATION EFFORTS – 20

**THIS IS THE NUMBER OF
INFESTED HOST TREES
REMOVED SO FAR IN
MASSACHUSETTS**



ERADICATION EFFORTS – 40

**THE AGES OF THE WORCESTER
INFESTATION AND BOSTON
INFESTATION**



ERADICATION EFFORTS – 60

THE ESTABLISHMENT OF
QUARANTINE ZONES IS
IMPORTANT FOR THIS
REASON



ERADICATION EFFORTS – 80

THIS OPTION IS AN EXAMPLE
OF WHAT CAN BE DONE TO
PROTECT A HOST TREE FROM
ALB



ERADICATION EFFORTS – 100

**THIS IS ONE WAY THAT YOU
CAN HELP STOP THE SPREAD
OF THE ASIAN LONGHORNED
BEETLE**

