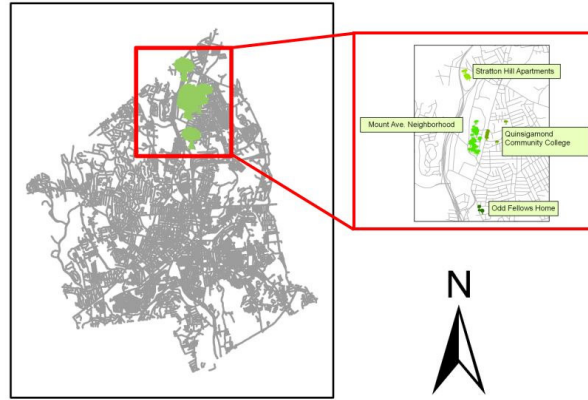




Quinsigamond Community College

ALB Reforestation Plantings Worcester, MA Spring/Summer 2009



Asian Longhorned Beetle Reforestation Program

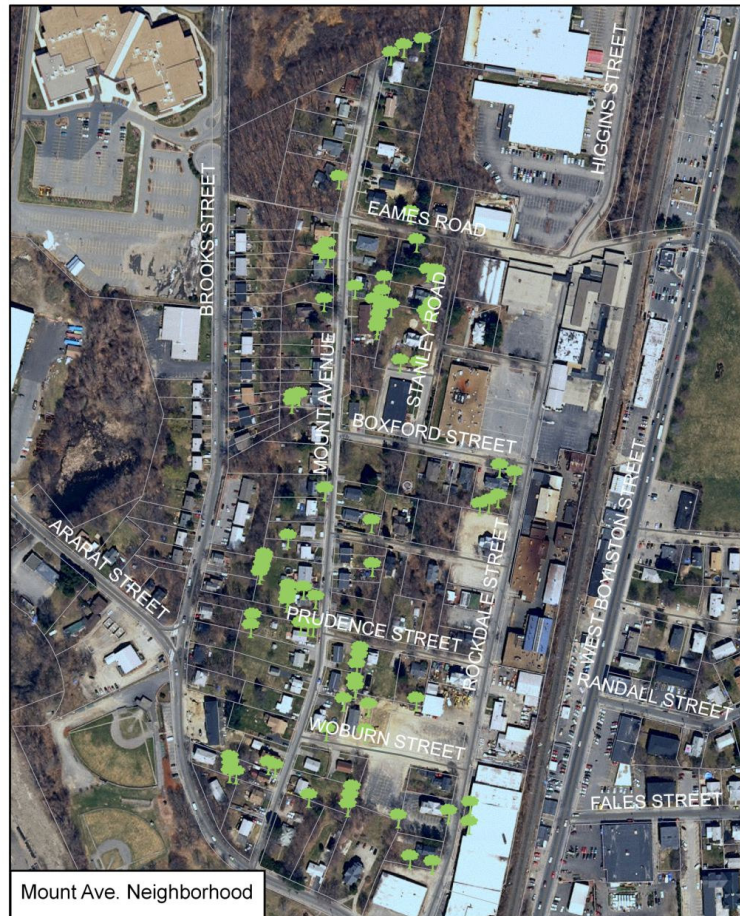
USDA-APHIS, through the USDA-Forest Service, has given \$500,000 for the planting of 1,500 trees in Worcester. This is phase one of the ALB reforestation effort. This planting is being coordinated by the Massachusetts Department of Conservation and Recreation (DCR) and will take place between spring 2009 and spring 2010. In spring 2009, DCR planted 131 trees at four sites in Worcester.



Odd Fellows Home

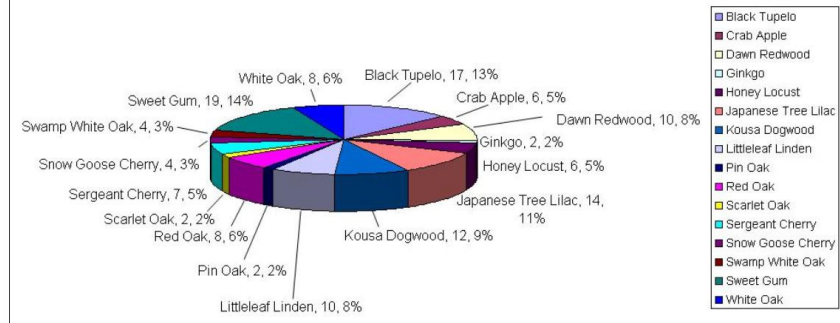


Stratton Hill Apartments

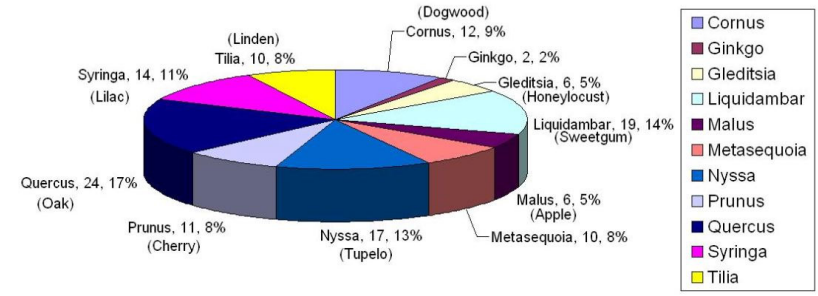


Mount Ave. Neighborhood

Planting by Species and Genus



Labels: Species, Count, Percent of Total Trees Planted



Labels: Genus, (Genus Common Name), Count, Percent of Total Trees Planted